



7 Donohoe Way Silverdale NSW

5  3  2 

This stunning double-storey residence boasts 5 spacious bedrooms and 5 living areas, providing ample room for everyone to enjoy.

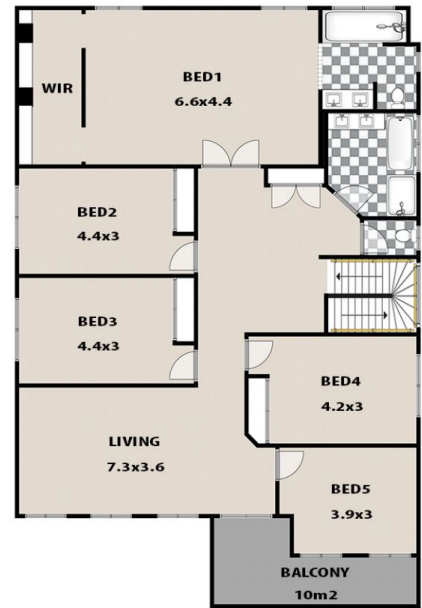
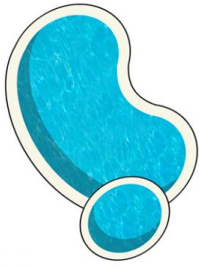
With three bathrooms and a double garage, convenience is key throughout. The modern kitchen boasts an island bench with breakfast bar seating, a walk in pantry and overlooks the ample living spaces; perfect for bringing the family together.

Located in a quiet cul-de-sac on a great block, featuring a sparkling in-ground pool and an oversized entertaining area.

- Five spacious bedrooms, four of these with built in

[For full version visit the website](https://www.aitkenre.com.au/8273956)

Type : House
Land Size : 700.4 sqm
View : <https://www.aitkenre.com.au/8273956>



LEGEND



7 DONOHOE WAY, SILVERDALE

This floor plan and/or site plan is an approximation for illustration purposes only.
 All measurements are approximate and not guaranteed to be exact or to scale.
 Interested parties should confirm measurements by their own means.

