



29/37 Bradley Street Glenmore Park NSW

2 2 1

This high-quality two-bedroom apartment offers a contemporary and spacious design, perfect for comfortable living or investment. Boasting a generous open-plan layout, it features expansive living and dining zones, creating a seamless flow throughout. The stylish kitchen is equipped with stone benchtops, ample cupboard space, and modern appliances, making it ideal for everyday living. Step out onto the balcony, which flows off the lounge room, offering a peaceful space to relax. The apartment includes two large bedrooms, with the master featuring a private ensuite. The main bathroom is beautifully tiled from floor to ceiling and includes both a bath and shower. Additional highlights include a secure car space, air-conditioning, downlights, and an internal laundry. Situated in the popular suburb of Glenmore Park, this property is situated just moments from

Type : Unit
Price : \$ 620,000
View : <https://www.aitkenre.com.au/8276222>

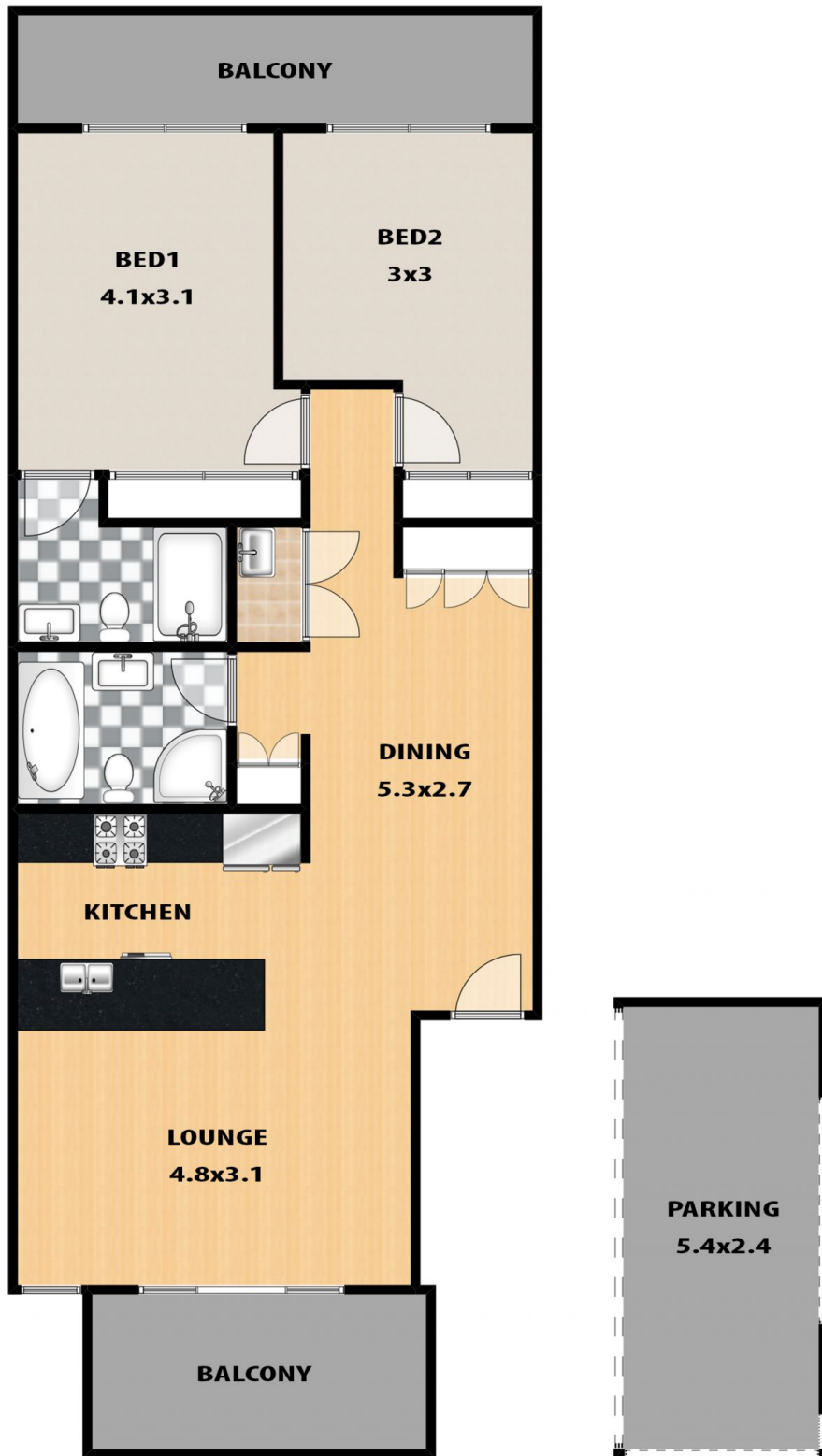


Joey Lustrì
 02 4732 5055



Jackson Walker
 4733 6999

[For full version visit the website](https://www.aitkenre.com.au)



LEGEND



**BATHROOM
ENSUITE : WC**



LAUNDRY

29/37 BRADLEY STREET, GLENMORE PARK

This floor plan and/or site plan is an approximation for illustration purposes only. All measurements are approximate and not guaranteed to be exact or to scale. Interested parties should confirm measurements by their own means.